

Quantech's pre-configured air-cooled chillers with the most popular options and standard tonnages are delivered in 2-5 days, not weeks or months. Plus, an extended made-to-order offering to meet any need.

► fast

- Air-cooled stocked chillers in two to five business days
- Faster installation and commissioning with native communication protocols

⚡ efficient

- Meets or exceeds ASHRAE 90.1-2013
- Up to 47% of annual energy cost savings
- Low refrigerant charge helps earn Refrigerant Management LEED credit
- Lower lifecycle costs

✓ dependable

- Smaller, lighter, quieter and low-maintenance
- A track record of exceptional reliability, the result of over 140 years of engineering excellence.
- Manufactured by Johnson Controls as part of the Johnson Controls' product portfolio.



Quantech Authorized Contractor benefits:

- Quantech allows its Authorized Contractors to perform start-up saving approximately 5% on bids - keep your money
- Ability to schedule start-up when needed - no issues or delays
- Maintain maintenance/service contracts without interruption
- Authorized Contractor performs the Quantech parts and labor warranty
- **No cost** on Quantech scroll-based products for **first year labor** warranty when Authorized Contractor completes start-up



Raise Your Expectations.  
Quantech™ chillers deliver efficiency and dependability in 2-5 days, not weeks.



For more information visit us at: [quantech-hvac.com](http://quantech-hvac.com)



Quantech is a trademark of Johnson Controls. Quantech products are manufactured as part of the Johnson Controls product portfolio.  
©2019 Johnson Controls PUBL-8722



The Quickest Way To Cool.

► fast ⚡ efficient ✓ dependable



## QTC2

15-50 TR  
AIR-COOLED SCROLL CHILLER



The QTC2 provides chilled water for all air conditioning applications using central station air handling or terminal units, and it meets or exceeds ASHRAE 90.1-2013 efficiency standards.

- Delivered from inventory in two to five business days
- R-410A refrigerant and low charge to help earn a point for LEED E&A Credit 4
- Factory-designed and installed pump package including pump, strainer, flow switch, circuit balancing valve, expansion tank
- Factory-installed BACnet MS/TP interface to reduce commissioning time and complexity
- Reliable operation in a variable primary flow system
- Lighter and smaller to minimize installed cost and maximize usable space

### Key Technology Elements

- Tube and fin condensers, brazed plate evaporators, scroll compressors
- Louvered enclosures for added protection
- Completely self-contained and designed for outdoor installation
- Includes hermetic scroll compressors, a liquid evaporator, air-cooled condenser, factory charged with R-410A refrigerant, and a weather-resistant microprocessor control center, all mounted on a rugged, formed-steel base

## QTC3

40-230 TR  
AIR-COOLED SCROLL CHILLER

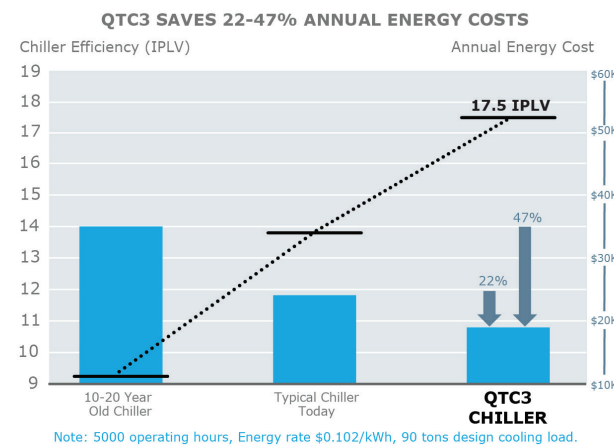


The QTC3 offers full load and part load efficiencies that meet or exceed ASHRAE 90.1-2013 and operates at ambient temperatures up to 125°F and down to 0°F.

- Delivered from inventory in two to five business days
- Up to 47% annual energy cost savings
- Heat recovery at the chiller
- Sturdy, corrosion-resistant condenser coils that are easily washable
- Simple replacement of condenser coil if damaged
- Compact, factory-packaged variable speed driven chilled water pumps
- R-410A refrigerant and low charge to help earn a point for LEED E&A Credit 4
- Native communication protocols to reduce installation cost and commissioning time

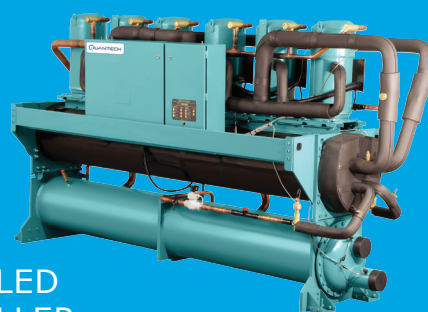
### Key Technology Elements

- Scroll compressors – reliable, proven design and two independent circuits for partial redundancy
- Heat exchangers – high efficiency brazed plate evaporators, advanced microchannel condensers
- Low-sound or ultra-quiet fans, both with optional VSD controls
- Completely self-contained and designed for outdoor installation
- Includes zero-ozone-depletion refrigerant (R-410A), hermetic scroll compressors, a liquid evaporator, air-cooled condenser and a weather-resistant microprocessor control center, all mounted on a formed steel base



## QWC3

50-200 TR  
WATER-COOLED  
SCROLL CHILLER



The QWC3 has efficiency superior to the industry average, providing capacity to meet the cooling requirement for a wide range of facilities and various operating conditions.

- 16-37% annual energy cost savings
- Designed for Quiet Operation with vibration isolators, scroll compressors, and specifically designed piping
- Smaller Foot Print designed to fit through a standard single door for faster installation time, minimized install costs, and maximize usable space
- Factory-installed BACnet MS/TP interface providing Native communications to reduce commissioning time and complexity
- R-410A refrigerant

### Key Technology Elements

- Energy efficient at both Full Load and Part Load that exceed industry averages, up to 24.5 IPLV
- Completely self-contained and designed for indoor (new or retrofit) installation
- Include hermetic scroll compressors, dual-circuit direct-expansion evaporator, shell and tube condenser, a charge of R-410A refrigerant, and a microprocessor control center, ready for field installation

## QRC3

50-170 TR  
REMOTE CONDENSER  
SCROLL CHILLER



The QRC3 has efficiency superior to the industry average, providing capacity to meet the cooling requirement for a wide range of facilities and various operating conditions.

- To be paired with a Quantech QDC or an existing condenser
- Hermetic scroll compressors for quiet, indoor operation

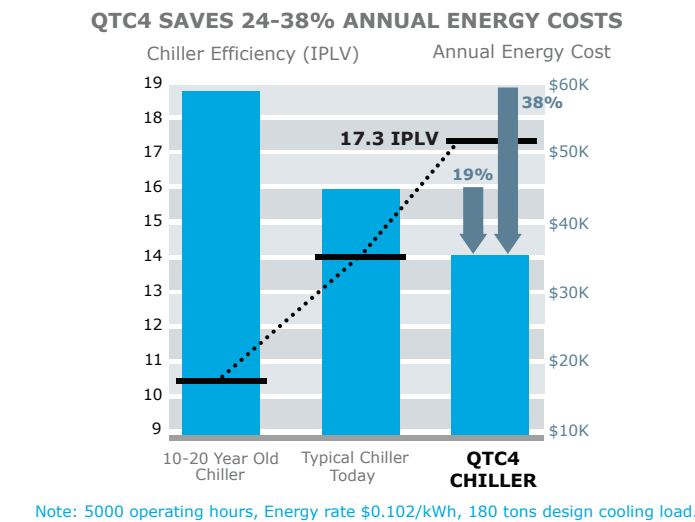
## QTC4

150-360 TR  
AIR-COOLED VARIABLE  
SPEED DRIVE SCREW CHILLER



The QTC4's combination of state-of-the-art technologies in compressors, heat exchangers (evaporator and condenser), condenser fans and chiller controls enable it to deliver market leading part load efficiency (IPLV or NPLV) while meeting or exceeding ASHRAE 90.1-2013 full load efficiency standards.

- In-stock chillers delivered in two to five business days; made-to-order chillers delivered in 8-10 weeks
- Variable speed drive screw compressors
  - Dramatically reduce sound levels at off-design conditions (up to 16 dBA)
  - Reduce energy consumption
- Up to 38% annual energy cost savings
- Hybrid falling film type evaporator for optimal efficiency and refrigerant charge
- Micro-channel type condenser for maximum heat transfer and minimum refrigerant charge
- Optional condenser fans with variable speed drives for even higher chiller part load efficiency
- Variable primary flow (VPF) system to reduce the chilled liquid flow to match the building demand



## QCC2

15-80 TR  
AIR-COOLED SCROLL  
CONDENSING UNIT



Quantech™ Air-Cooled Condensing Units fit air conditioning applications that use direct expansion central air handling. Has a higher capacity range and is designed for outdoor installation (roof or ground level). Its hermetic scroll compressors off fewer moving parts and a weather resistant control center. This air-cooled condensing unit has the highest efficiency for its capacity range.

- Shared Engineering Expertise in features to Quantech's other air-cooled condensing units
- Smart Equipment capable with BAS communications
- Durability with pre-coated condenser coils, epoxy coated condenser coils service isolation valves, various wire / louver combinations
- Environmental zero-ozone depletion refrigerant (R-410A)
- Sound reduction with acoustic sound blankets for compressors and ultra-quiet fans

## QDC

175-2,280 MBH - REFRIGERANT  
AIR-COOLED CONDENSER



Quantech™ QDC's versatile operation with various air-conditioning or refrigeration applications. Ability to be paired with a range of compressors using halocarbon refrigerants. Built for outdoor installation, these air-cooled condensers are available in 66 standard model sizes. With high efficiency, high-strength blade fans used for quiet operation and energy efficient performance, the QDC operates dry and requires minimum maintenance, providing cost savings.

- Quiet Operation with low-speed, high-efficiency fans, flexible configuration from 1 to 12 fans per unit
- Matched with chillers refrigerant pressure controlled fan cycling required for R-410A applications
- Alternate refrigerant ratings available in R-22, R-134A, R-404A, R-407C and R-507A
- Panel includes single point non-fused disconnect, motor fuses, contactors, and control transformer

## QCC3

80-160 TR  
AIR-COOLED SCROLL  
CONDENSING UNIT



## QDCF

65-2,890 MBH -  
AIR-COOLED FLUID COOLER



Quantech™ QDCF Air-Cooled Fluid Coolers for commercial and industrial cooling is flexible in its design to be used with water or glycol. This adaptable fluid cooler is available in 22 standard model sizes and built for outdoor installation. Rated for the concentration of glycol that will be used. The QDCF features air-sides that operate dry, requiring minimum maintenance and avoiding pump and water piping installation, except for fluid-sides.

- Quiet Operation with low-speed, high-efficiency fans, flexible configuration from 1 to 12 fans per unit
- Use for free-cooling applications
- Reduced water maintenance industrial fluid cooling and closed-loop alternative to cooling towers
- Energy efficient flexible configuration from 1 to 12 sections produces optimum number of rows at low face velocity meaning low horsepower required to give maximum BTU per hp
- The panel includes single point non-fused disconnect, motor fuses, contactors, and control transformer

Cooler. Quicker. Quantech.

fast efficient dependable